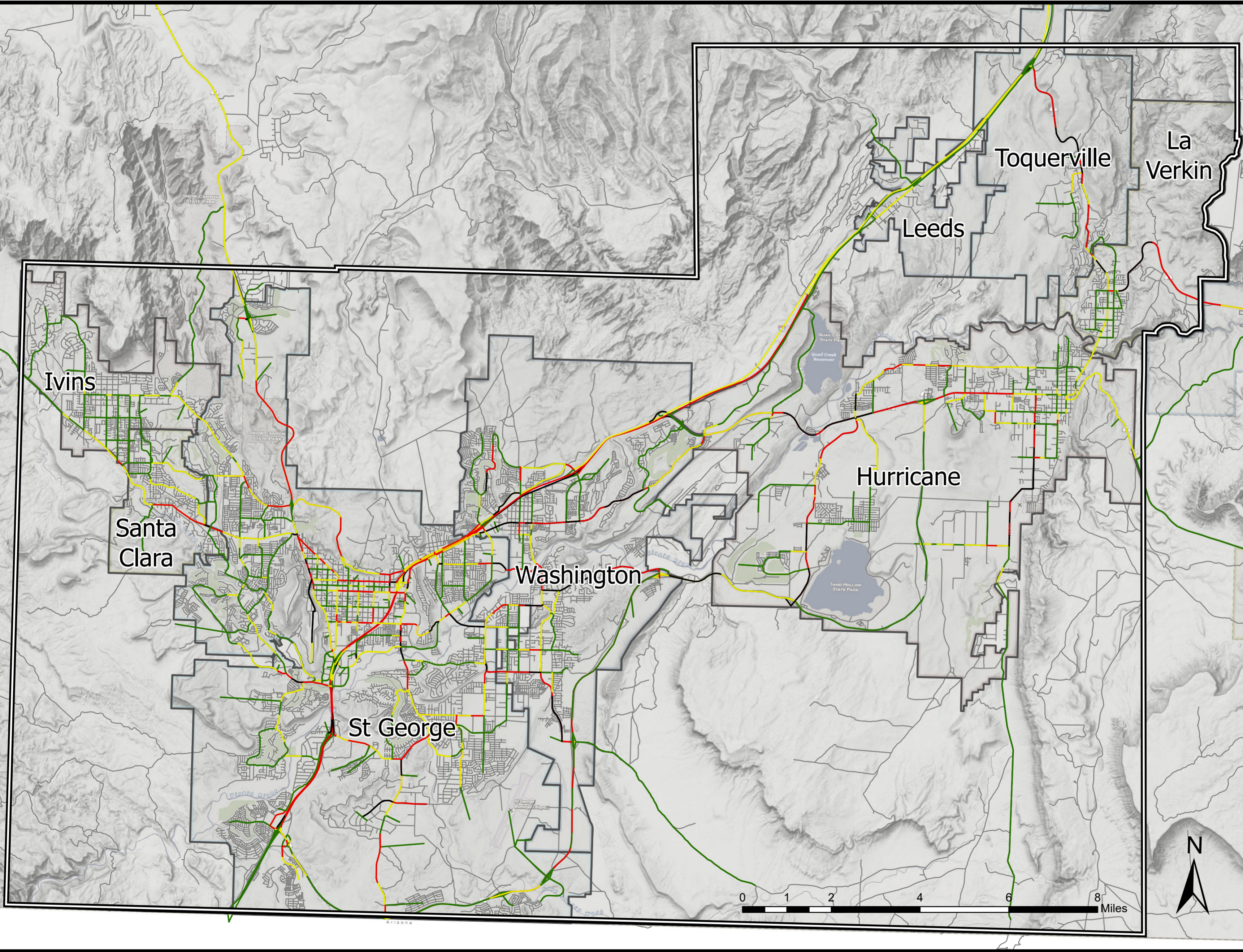


**Dixie Metropolitan  
Planning Organization  
Traffic Congestion 2050  
No-Build  
Regional Transportation  
Plan  
2023-2050**



- Legend**  
**V/C - Volume/Capacity Ratio**
- Below 0.60
  - Between 0.6 - 0.90
  - Between 0.9 - 1.2
  - Above 1.2

