



Southern Parkway Phase 3 Transportation Study

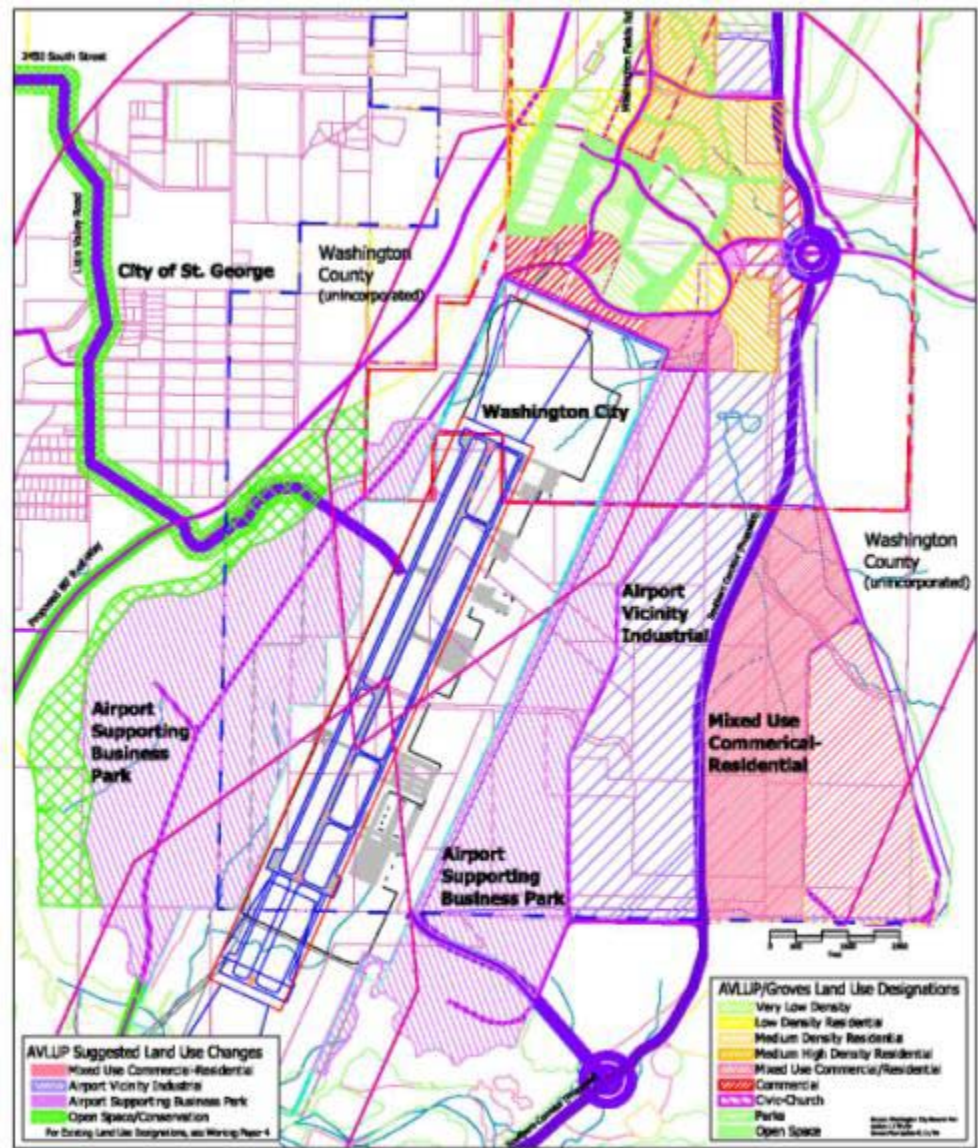
Steering Committee Meeting
February 10, 2009



SOUTHERN PARKWAY

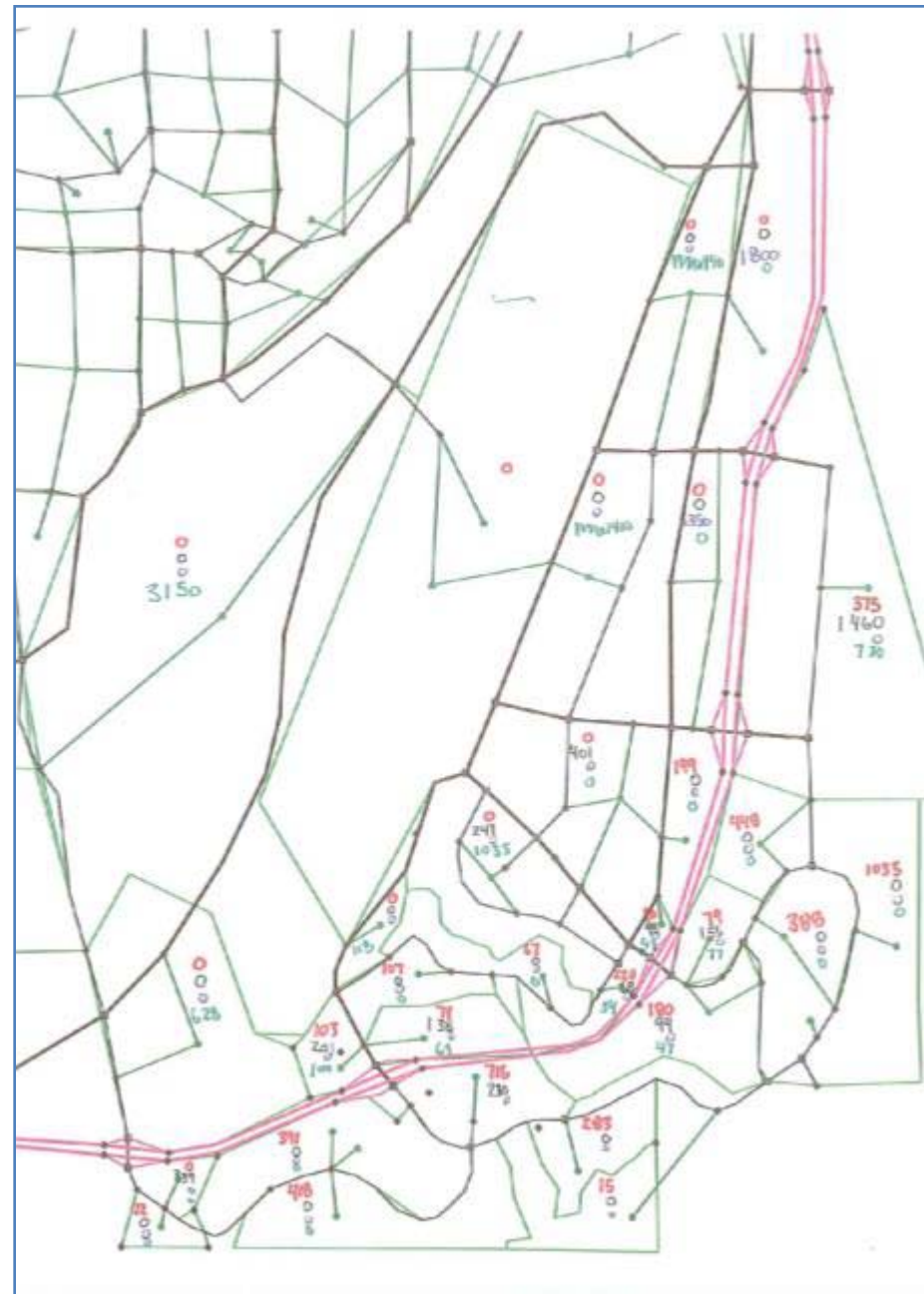
Land Use Summary

- Airport Vicinity Land Use Plan



Land Use Summary

- Population
 - 5,167 dwelling units
- Employment
 - Service: 8,137
 - Retail: 3,431
 - Non-retail: 3,150
 - Total: 14,718

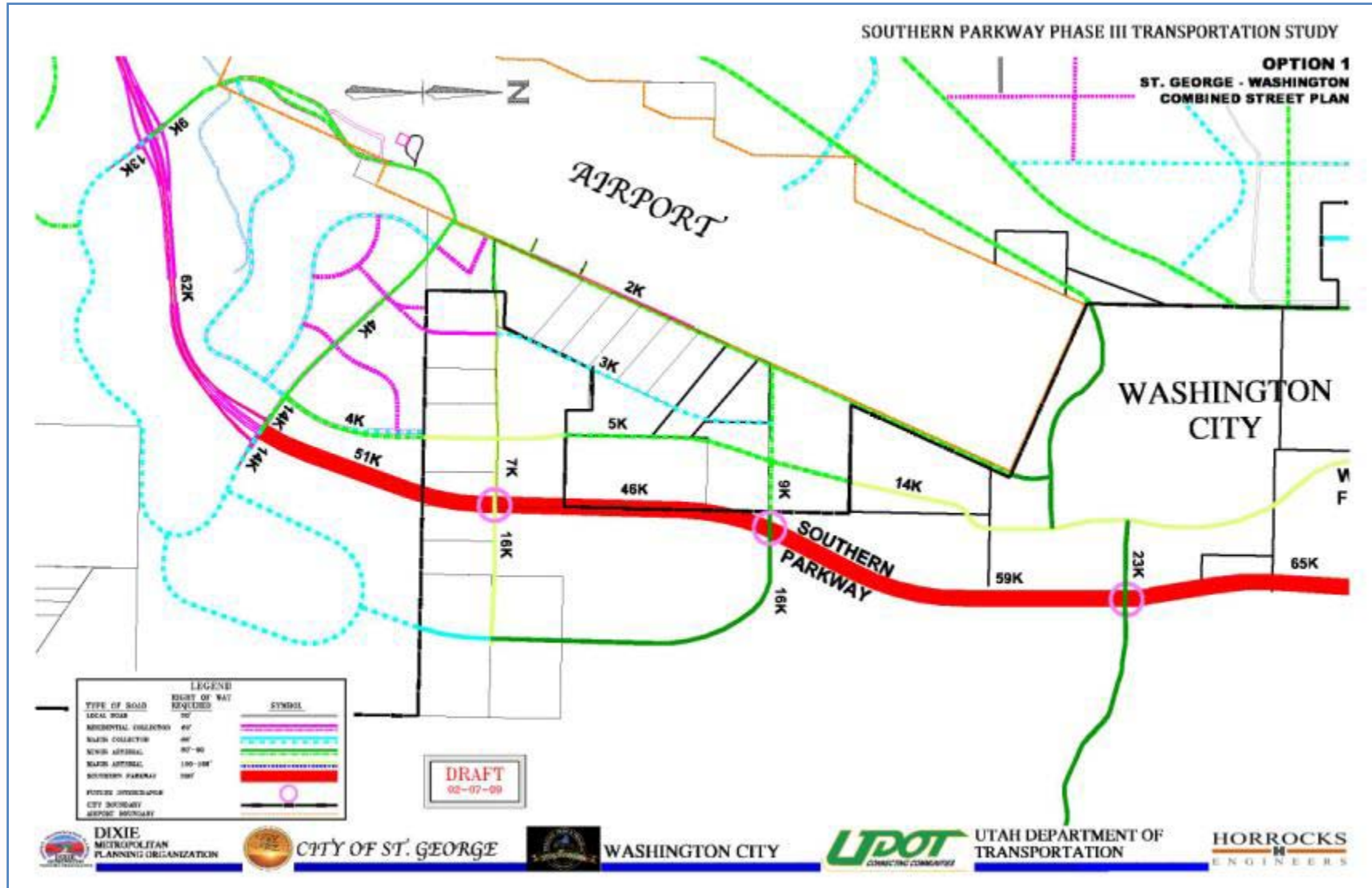


Preliminary Traffic Analysis

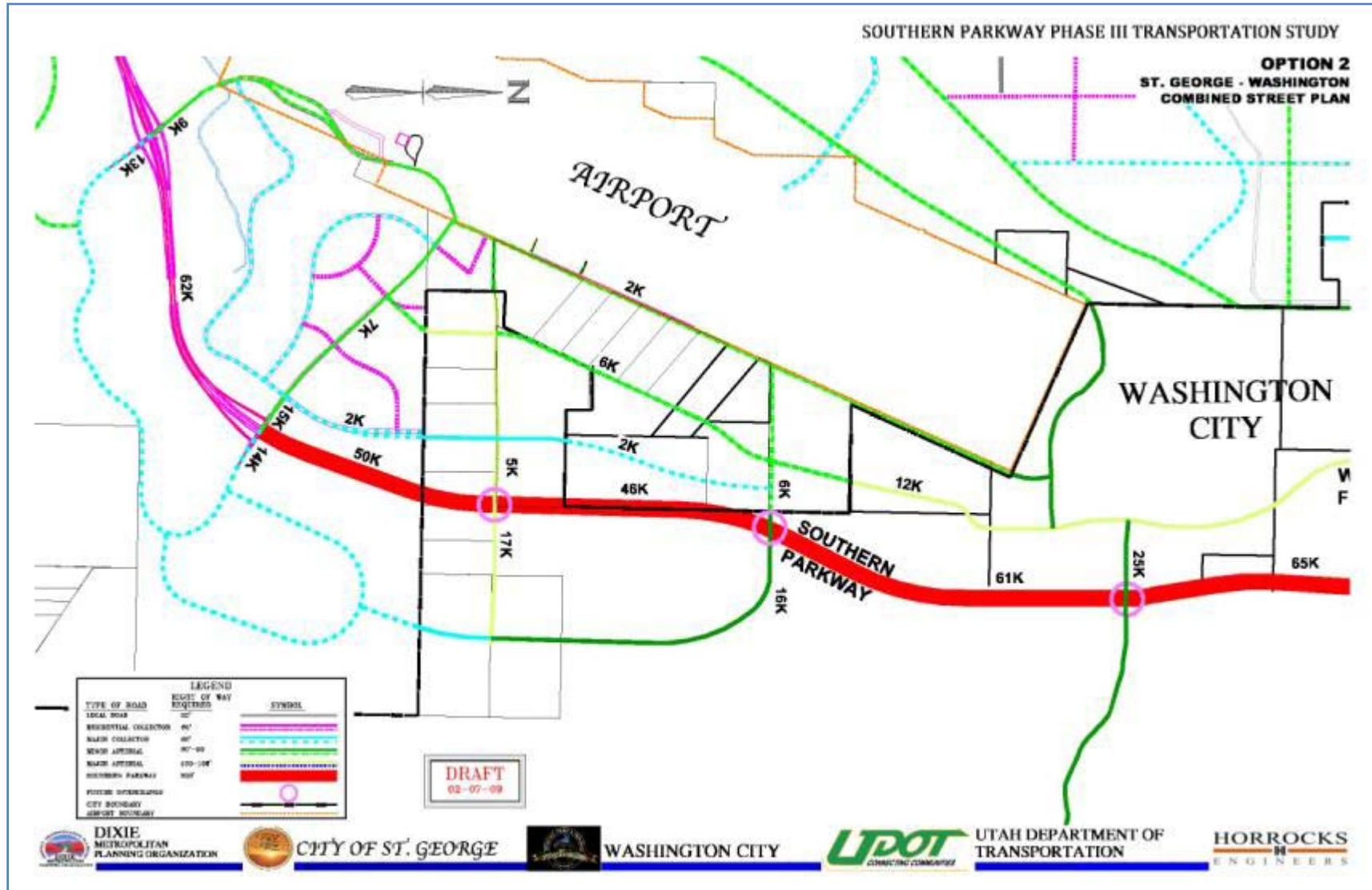
- Four (4) options
 - Option 1
 - Washington Fields Rd closer to So. Pkwy.
 - Option 2
 - Washington Fields Rd closer to Airport
 - Option 3
 - Washington Fields Rd in the middle (master plan)
 - Option 4
 - No interchanges on So. Pkwy. (EIS)



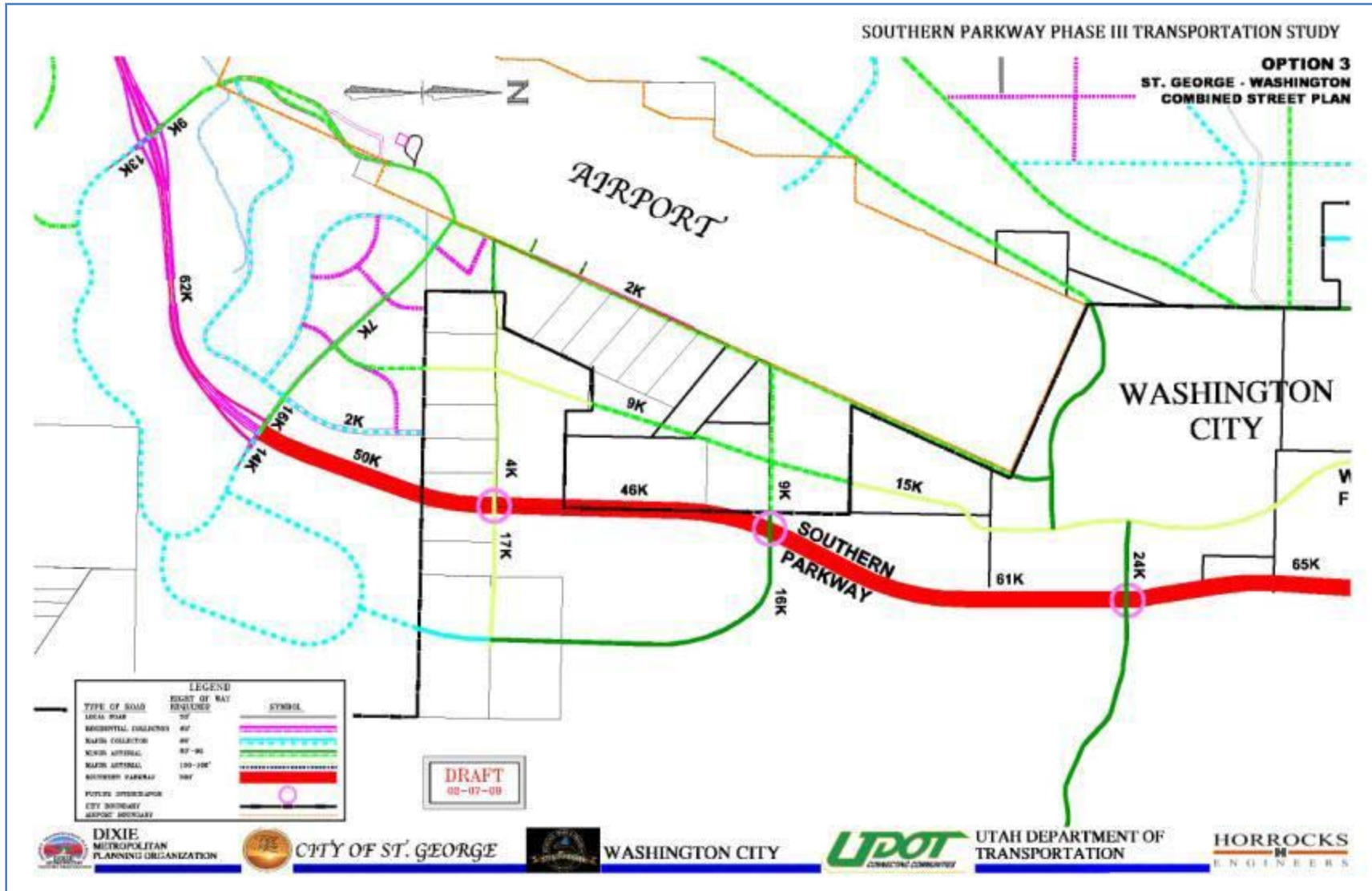
Option 1



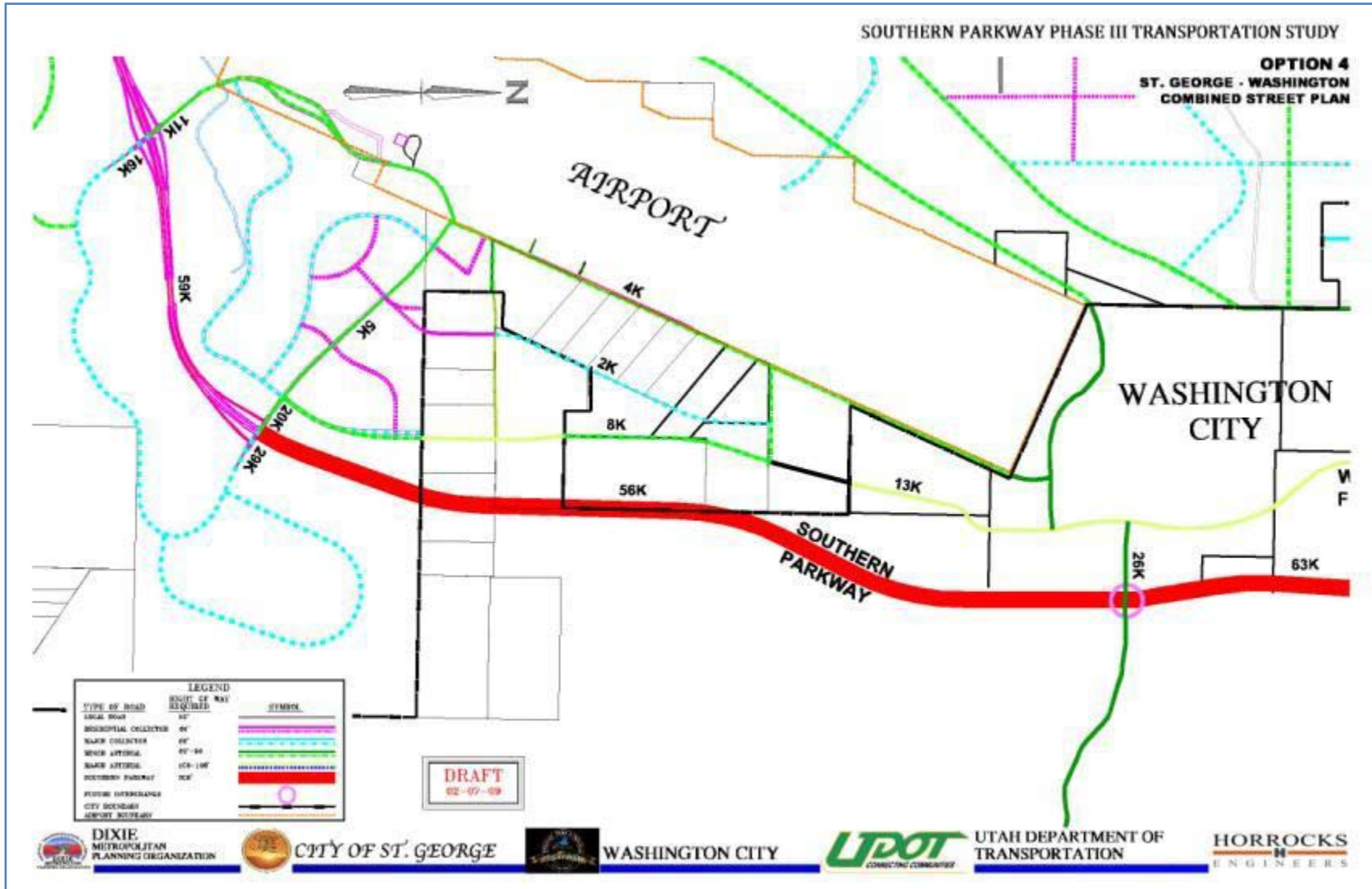
Option 2



Option 3



Option 4



Needed Information

- Development Plans
 - Roadways
 - Land use
- Airport Parkway North
 - Airport access locations
- Corrections to property/parcel data



March 4 Meeting

- Next round of traffic projections
 - Revised land use
 - Incorporate any new information
- Access management discussion



Thanks!

Tamerha Maxwell, PE
UDOT Project Manager
Phone: (435) 865-5511
tamerha@utah.gov

Lee Cabell, PE
Horrocks Engineers
Phone: 986-7888
lee@horrocks.com



Regional Map

